



# THE COMPLEAT SCULPTOR

90 Vandam Street New York NY 10013

212-243-6074 TCS@SCULPT.com

800-9-SCULPT www.SCULPT.com

## Versi-Flex Operations Manual

### SAFETY RULES

- Disconnect power before changing tools/accessories or inspecting or cleaning the machine
- This equipment is for use on 115 volt single phase AC power. It is equipped with a three prong grounding type plug for protection against shock hazard. It should be plugged directly into a properly installed and grounded three-prong grounding receptacle.
- If an extension cord is needed, it must be of the correct size to handle 7 amps.
- Do not wear loose clothing or jewelry. Use of work gloves is strongly recommended.
- Use safety glasses. Also a face shield and dust mask if operation is dusty.
- Position electric cord away from rotating tool. Do not operate machine with a damaged cord.
- Practice on scrap material to familiarize yourself with the machine and the accessories you will be using.
- Do not use dull or damaged tools or accessories.
- Do not leave machine running unattended.
- To prevent accidents, do not lay the hand piece down while it is rotating.
- Allow each accessory to run freely at operating speed for at least one minute before use.

### MAINTENANCE

- Make sure power is disconnected before cleaning or servicing
- Motor – The motor is equipped with sealed, permanently, lubricated ball bearings which require no maintenance. Vent openings on front and rear motor must be kept clear of any obstruction which could prevent proper cooling of motor.
- Flexible shaft – the inner core must be lubricated once every 20 hours of use. To remove the inner core:
  - Unscrew hand piece from outer casing (R.H. thread)
  - Pull hand piece away from outer casing and insert pin or nail (not supplied) through exposed hole in inner core
  - Use 5/8" open-end wrench to unscrew hand piece spindle from inner core (R.H. thread)
  - Screw core puller (Part # VF205) into inner core and pull slightly to allow pin or nail to be removed
  - Unscrew core puller from inner core
  - Unscrew outer casing from motor hub (R.H. thread) and slide free from inner core
  - Remove socket screw from inner core and pull from motor shaft
  - Coat entire surface of inner core lightly with core lubricant
  - Slide inner core back onto motor shaft while aligning socket screw with hole in motor shaft
  - Tighten socket screw securely
  - Slide outer casing over inner core and screw onto motor hub
  - Screw core puller into inner core and pull to exposed hole
  - Place pin or nail through hole and remove core puller
  - Screw hand piece spindle into the exposed inner core and tighten securely
  - Pull inner core slightly and remove pin or nail
  - Screw hand piece onto outer casing
  - All threaded connections must be tightened securely before operating machine
- Hand piece - The hand piece is equipped with sealed, permanently, lubricated ball bearings which require no maintenance.

### REPAIR SERVICE

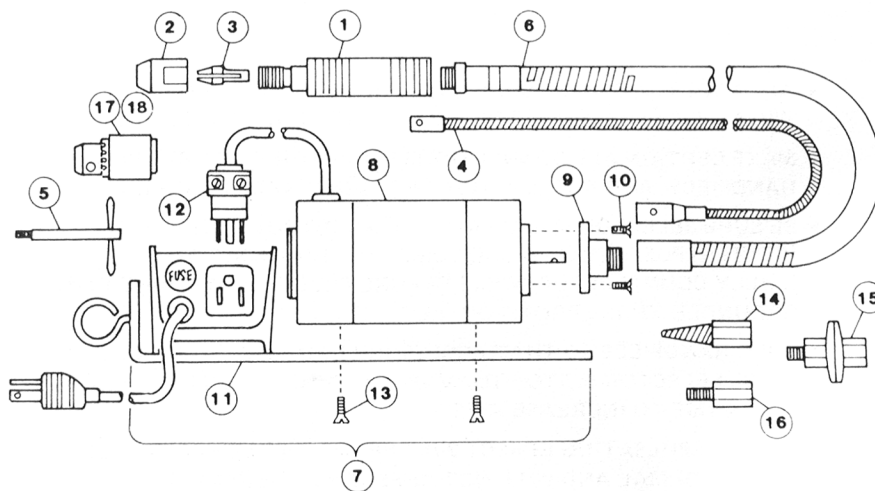
- Factory repairs are performed quickly and at a reasonable cost. Unit can be sent directly to the factory or to The Compleat Sculptor and must include a description of the problem and all contact information. Estimates are free.

### MACHINE OPERATION

- All tools and accessories require two 5/8" open end wrenches (not supplied) for proper tightening on hand piece
- Make certain all connections on motor , flexible shaft, hand piece , and accessories are tightened securely

- Be sure selector switch on speed control is in off (center) position and the control knob is set to “0” (fully counterclockwise) before plugging machine into grounded three-prong outlet
- Hold hand pieces so that accessory can rotate safely. Place selector switch to “var” and turn control knob clockwise to increase speed
- A slight pulsating effect will be felt at lower speeds. This is normal and will not affect performance
- The control knob will vary the speed from zero to 80% of the maximum. For continuous maximum speed, set the selector switch to “full” (control knob has no effect on the “full” setting).
- The flexible shaft must not be bent through an angle smaller than 90° or in a radius of less than 6”. Failure to follow these restrictions may shorten the life of, or cause permanent damage to the flexible shaft.
- When using a drill chuck, tighten with chuck key in each of the three holes to assure true running. Do not exceed 6000 rpm.
- Grinding wheels, wire wheels, and buffing wheels with ½” arbor should be secured between flanges supplied with the adaptor and should not exceed 5” in diameter.
- To use adapters, unscrew collet cap and remove collet. Screw desired adapter onto exposed thread and tighten securely.
- Almost every problem associated with the flexible shaft concerns the inner core. Bending the flexible shaft in a manner prohibited in the operating instructions or jamming the accessory used with the shaft will very likely permanently damage the inner core. Consequently, it is not possible to warranty the inner core against damage or breakage.

### REPLACEMENT PARTS ILLUSTRATION



### REPLACEMENT PARTS LIST

Ref No.	Part Name	Part No.			
1	Handpiece	VF 199	11	Base with Speed Control	VF 407\
2	Collet Cap	VF 101	12	Motor Plug	VF 408
3	Collet	VF 102-x	13	Base Screws (4 required)	VF 409
4	Complete Inner Core	VF 299	14	Tapered Adaptor	VF 501
5	Core Puller	VF 205	15	½” x 20 Thread Adaptor	VF 502
6	Complete Outer Casting	VF 399	16	3/8” x 24 Thread Adaptor	
7	Complete Pwr Unit Assembly	VF 499	17	For Drill Chuck	VF 503
8	Motor	VF 401	18	¼” Capacity Drill Chuck	VF 405-8
9	Motor Hub	VF 402	19	3/8” Capacity Drill Chuck	VF 504-12
10	Motor Hub Screws (4 req’d)	VF 403		Core Lube	VF 601

### LIMITED WARRANTY

Flexible Shaft Corporation warrants each new Versiflex to be free from defects in materials and workmanship for one year from date of purchase. Our obligation is limited to the repair or replacement of parts, with out charge, which are defective. The complete product must be returned, transportation prepaid, to Flexible Shaft Corporation.

Damage due to improper use or abuse is not covered by this warranty. In no event shall Flexible Shaft Corporation be liable for any other loss or damage including consequential or special damaged that may result from use of this product, and the purchaser agrees to hold Flexible Shaft Corporation innocent with respect to all such loss. In all cases Flexible Shaft Corporation’s liability shall be limited to the purchase price paid.